

Station Road West, Canterbury, Kent, CT2 8DE

£1,300 PCM



## Station Road West

Canterbury, Kent CT2 8DE

In a truly amazing location is this two-bedroom, first floor unfurnished apartment, located only two minutes from Station Road West with its high-speed train access to Central London and six minutes' walk from Canterbury City Centre. Unusually for such a city centre location there is allocated parking for one car with a parking permit provided.

The apartment has an inner hallway which leads to an open plan lounge dining area with views over the Kings School recreation ground. The fitted kitchen has high gloss white units and white goods. There are two double bedrooms both with fitted wardrobes with the master bedroom having an ensuite bathroom. There is a further family bathroom with a shower cubicle. The apartment is unfurnished and ready to become your new home. Viewing is highly recommended if you use the high speed to commute or are looking for city centre living.

Rent £1,300

Council tax band: D.

Deposit £1,500

Unfurnished

Available: End of May 2026

Please refer to the fee's tab on our website ([www.sallyhatcher.co.uk](http://www.sallyhatcher.co.uk)) for all information on fee's and deposit options

### Entrance/ Hallway

### Kitchen

13'1" x 6'2" (3.995 x 1.889)





**Living Room**  
14'0" x 13'2" (4.276 x 4.036)

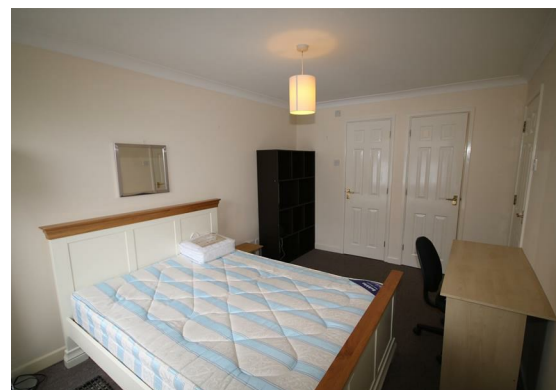
**Bedroom 2**  
9'5" x 7'6" (2.889 x 2.303)

**Bedroom 1**  
13'1" x 9'4" (4.009 x 2.867)

**Ensuite**

**Walk In Wardrobe**

**Family Bathroom**



## Floor Plan



## Viewing

Please contact us on 01227 733888 if you wish to arrange a viewing appointment for this property or require further information.

These particulars, whilst believed to be accurate are set out as a general outline only for guidance and do not constitute any part of an offer or contract. Intending purchasers should not rely on them as statements of representation of fact, but must satisfy themselves by inspection or otherwise as to their accuracy. No person in this firm's employment has the authority to make or give any representation or warranty in respect of the property.

## Area Map



## Energy Efficiency Graph

